

Target Group 2014

SPZA and South African partners reached out to 7,687 less kids and youth than in 2013

- 49%

in comparison with last year

 or  or  = 200 children/youth

We are investigating one partner's report 2013



Programme Out-of-School Care

2.685 children and youth



was in 2013: 11.120 children and youth



Programme Better Basic Education

2.445 children



was in 2013: 2.735 children



Programme Scholarships

3.042 youth



was in 2013: 2.004



See also impact on target group > [Impact](#)

Fund raising 2014

Number of donors has dropped by 27%
and income from donations excl. pro bono with over **-43%**



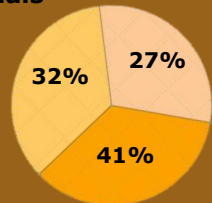
SPZA

... was in 2013:

67 donors gave:

Private individuals

Trusts/organizations



Businesses incl. pro bono

Average donation

€ 511

Total donations

€ 34.253

Average donation

€ 525

Total donations

€ 59.629

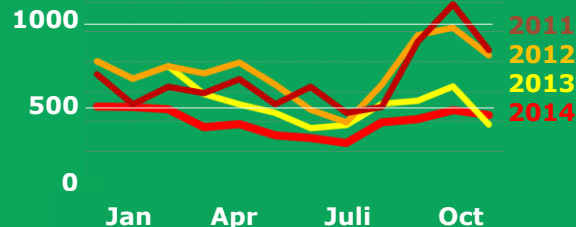


Communication 2014

The number of visitors declined by 10% in comparison with last year



Visitors www.spza.org

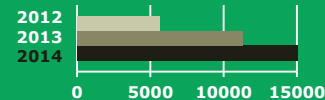


Social media

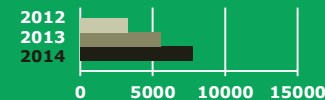
Facebook likes	102 in 2013 175 in 2014
Twitter followers	69 in 2013 78 in 2014
Autorstream views	460 in 2013 1.051 in 2014
YouTube views	2.564 in 2013 3.049 in 2014

Most popular downloads:

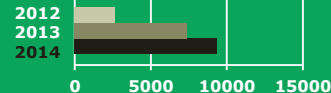
Fair Wine List



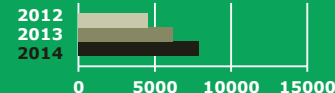
Impact



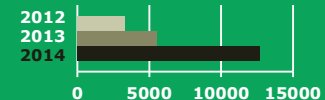
Holiday Schools Manual



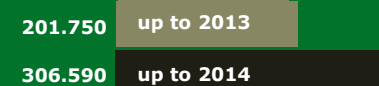
Tax Effective Donations



Volunteering Abroad



Other downloads



More facts and figures www.spza.org 2013 and 2014

Pages visited



New visitors



Tablet visitors



Pages per visit



Ubuntu subscribers



Posts



Income 2014

-46%

in comparison with last year

Own fund raising and fund raising third parties

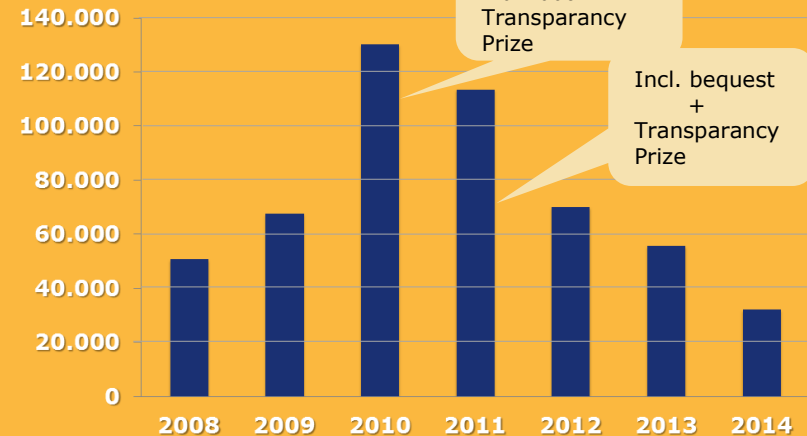
Totaal € 34,253



... was in 2013 € 63,158:



Fund raising since 2008



5 trustees

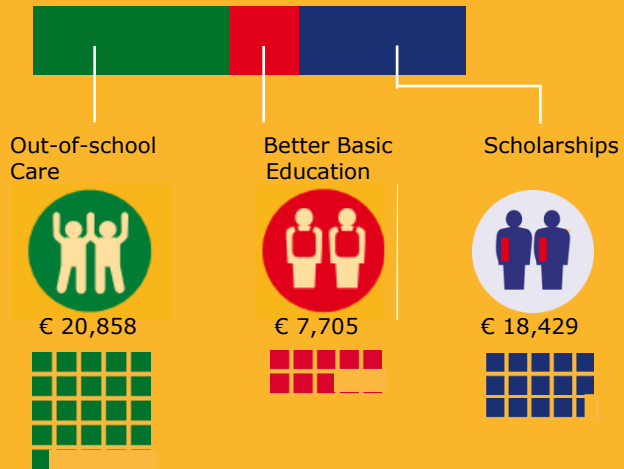


9 experts worked pro deo

Expenditure 2014

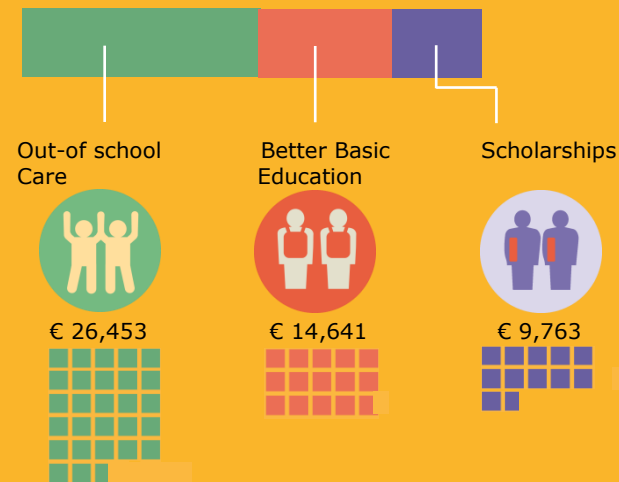
Spent on projects and empowerment partners

Total € 46,992:



-6% in comparison with last year

... was in 2013 € 50,857:



□ = € 1,000



Balance 2014

dropped because of dwindling General Fund and less grants



Assets € 181,448

Cash at bank

€ 164,639

€ 16,809
accounts receivable

- 10%

... was last year € 202,491

€ 192,671

€ 9,820
accounts receivable

Funds and liabilities € 181,448

Accounts payable: grants

General Fund

Donor Allocated Reserve

Grants

Continuity Reserve
€ 74,000

€ 33,878

€ 65,199

€ 8,371

... was in 2013 € 202,491

General Fund

Donor Allocated Reserve

Grants

Continuity
Reserve € 52,000

€ 71,381

€ 62,443

€ 16,667